



How to be a Woodworker

September 2022



Learning Goals

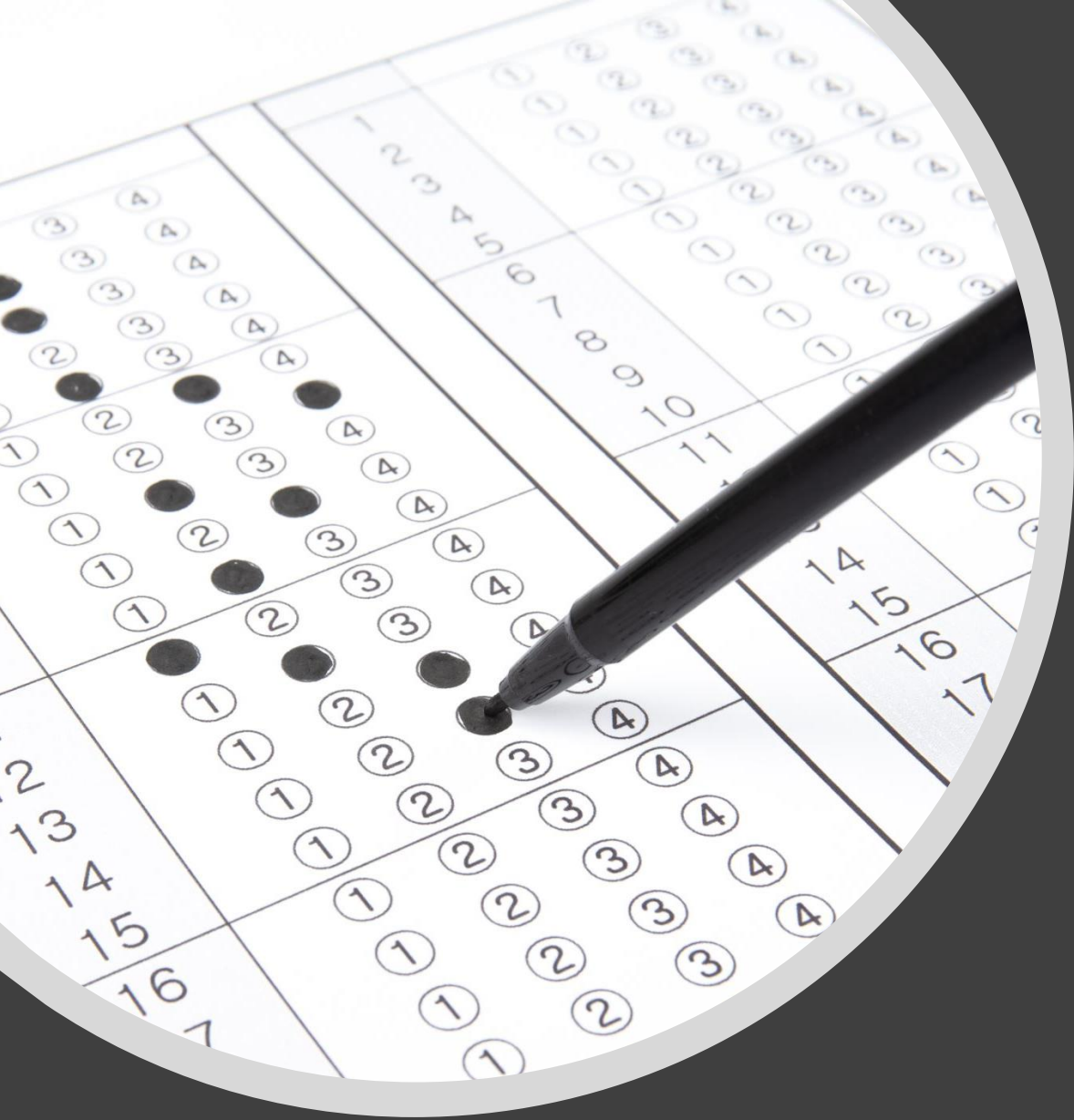
- Use correctly woodwork techniques
- Describe and explain how to operate measuring tools
- Name different measuring tools
- Discuss the operation of stationary woodworking measuring tools





How this course works

- **Blended Learning**
 - 2 weeks of face-to-face (W1 & W3)
 - 2 weeks remotely (W2 & W4)



Evaluation Modalities

- Hands-on work
- Formative exercises
- Theoretical exam

Course Plan

Training's Planning	SEPTEMBER			OCTOBER
	Week 1	Week 2	Week 3	Week 4
	05/09 - 09/09	12/09 – 16/09	19/09 – 23/09	03/10 – 07/10
	Face-to-face	Remote Learning	Face-to-Face	Remote-Learning
Introduction to Woodworking				
Marking Tools				
Measuring Tools				
Practical Work				
Theoretical Exam				